

PACKING LIST

Frame	pcs
Column	2
Feet	2
End pipe	2
Outer pipe	2
Connection pipe	2
Cable clamp	6
Rubber washers	8
Hole cap	8
Control Box / Hand control	pcs
Control box	1
Hand control	1
AC cable	1
Screws	pcs
Screw for motor house / Outer pipe, M6x16	8
Screw for feet, M10x16mm	8
Tailstock for connection pipe, M10x8mm	8
Screw for tabletop, Ø5x20mm	8
Screw for hand control, Ø5x22mm	2

Tightening torque

Tailstock	Maximum 6Nm
Screw for motor gouse and outer pipe	Maximum 10Nm
Screw for feet and tabletop	Maximum 10Nm
Screw for hand control	< 6Nm

Make sure all screws are tightened, also after a period of use!

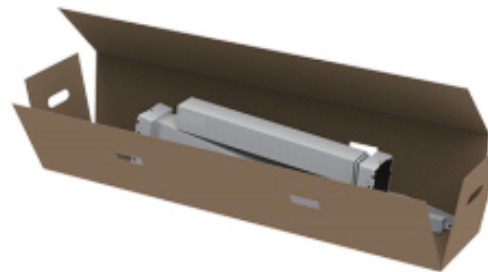
Reset the desk before use

Press both up and down buttons at the same time for 3 seconds. Continue pressing the buttons until both columns are in lowest position. When finish reset, the control box makes a sound and the buttons can be released. Now the system is operational.

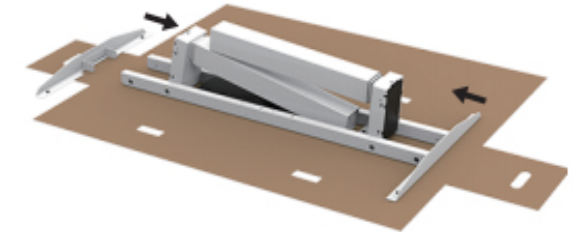
WARNING

Arrange all the cables carefully. Not to be damaged by tabletop screws.

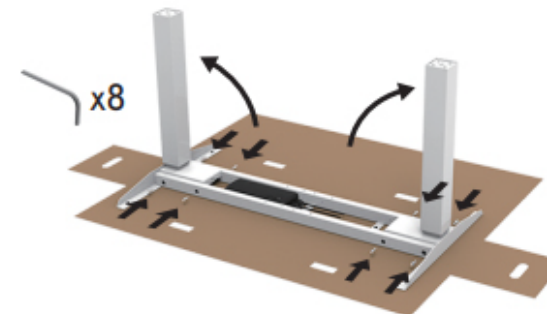
Step 1



Step 2



Step 3



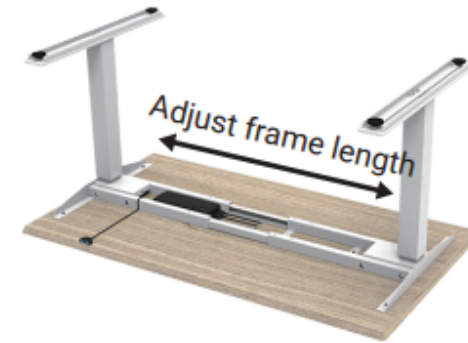
Step 4



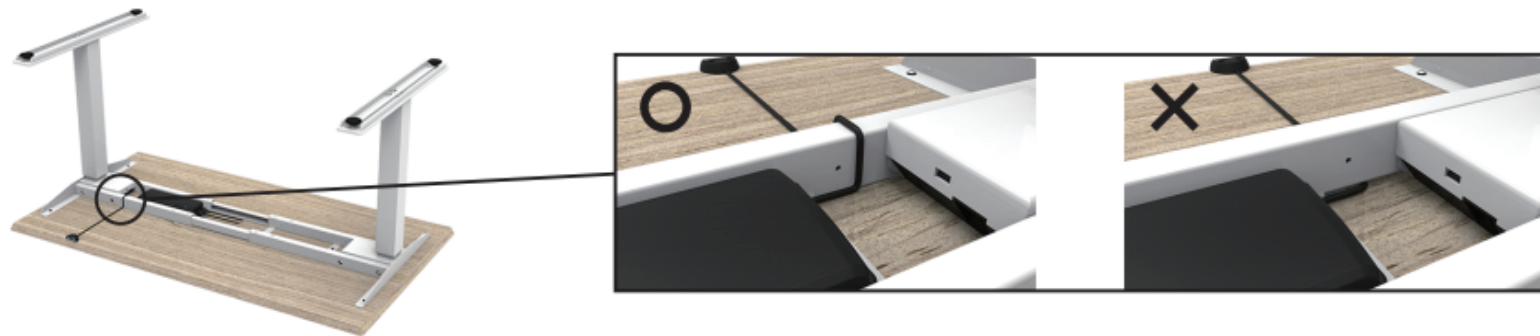
Step 5



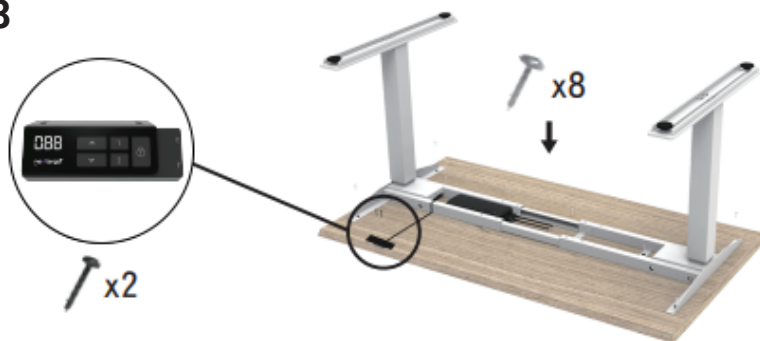
Step 6



Step 7



Step 8



Step 9



20201204
User Manual

Hand Control Programming - QG-NE-RC

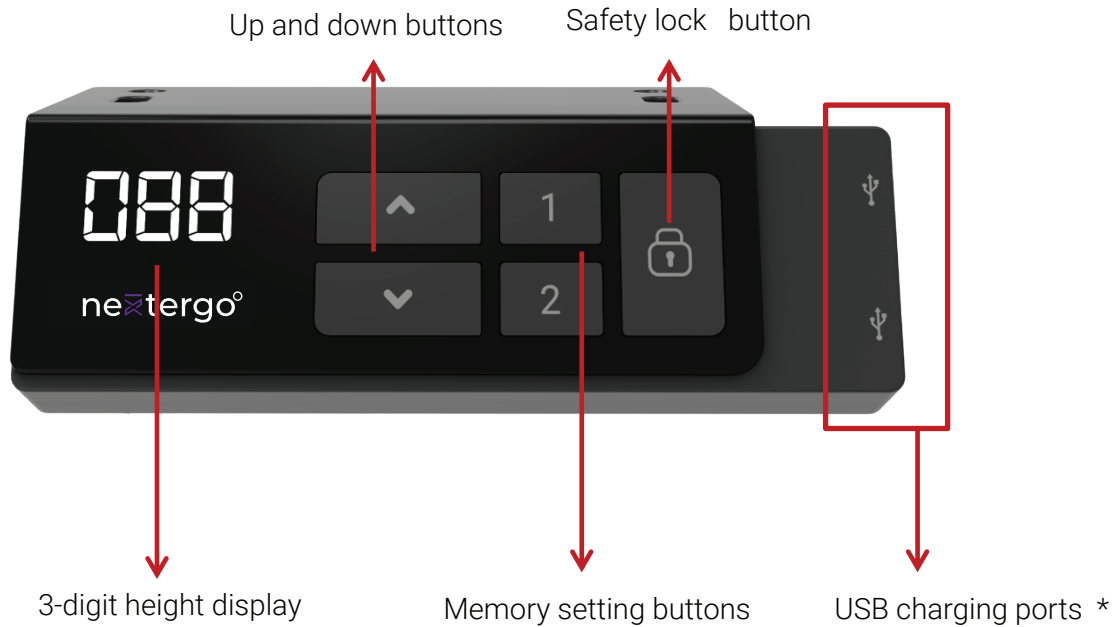
The logo for QualGear, featuring the word "QualGear" in a blue, sans-serif font. The letter "G" is stylized with a gear-like shape. A registered trademark symbol (®) is located at the end of the word. The background of the entire page features a decorative pattern of interconnected circles and lines, with one circle highlighted in purple.

QualGear®

Contents

Contents	2
1. User Interface Guide	3
2. Reset	4
3. Adjusting the Height	5
4. Setting the Memorized Position	5
5. Setting the Upper and Lower Height Limit	6
6. Presetting the Desk Starting Height	7
7. Lock / Unlock	7
8. Switching Metric and Imperial Unit	8
9. Error Codes	9
10. Power Saving Function - Waking Up the Control	10

1. User Interface Guide



*USB charging ports: For charging electronic devices

2. Reset

1. Simultaneously press ▲ and ▼ for 3 seconds. Continue pressing the buttons until both columns are in the lowest position. When finished with the reset, the control box makes a beep sound, and the buttons can be released.



2. When finished with the reset, the display will show the starting height.
3. Users must conduct a reset when the desk is operated for the first time.

3. Adjusting the Height

Press ▲ or ▼ button until the desk reaches the preferred height.

4. Setting the Memorized Position

QG-NE-RC supports a maximum of 2 memory positions.

How to memorize position :

1. Adjust the desk to the desired height.
2. Press the preferred memory button (1 or 2), with either ▲ or ▼ for 2 seconds. Once the display shows P1 or P2, the position is memorized.
3. Press (and hold) button 1 or 2 to move the desk to memorized position. [\(Note 1\)](#)



[Note 1](#) : It depends on the control box setting whether the memory button needs to be held or not.

5. Setting the Upper and Lower Height Limit

A. Setting the upper height limit:

- (1) Adjust the desk to the preferred upper height limit.
- (2) Press ▲ and ▼ buttons together less than 3 seconds, holding ▲ and releasing ▼ button. (Note 2)
- (3) Re-press ▼ for more than 3 times at a slow pace.
- (4) A beeping sound will notify you that the process has completed.

B. Disable the upper height limit:

- (1) Move the desk to the upper height limit that is being set.
- (2) Repeat instruction #2~4 above to disable the upper limit setting.

C. Setting the lower height limit:

- (1) Adjust the desk to the preferred lower height limit.
- (2) Press ▲ and ▼ buttons together less than 3 seconds, holding ▼ and release ▲ button. (Note 3)
- (3) Re-press ▲ for more than 3 times at a slow pace.
- (4) A beeping sound will notify you that the process has completed.

D. Disable the lower height limit:

- (1) Move the desk to the lower height limit that is being set.
- (2) Repeat instruction #2~4 above to disable the lower limit setting.

Note 2: Some control boxes may not support setting the upper and lower height limit functionality.

Note 3: Over 3 seconds will direct to "Reset" mode.

6. Presetting the Desk Starting Height

- (1) Press ▼ button until the desk reaches its lowest position and then release the ▼ button. Re-press the ▼ button again for 5 seconds, and the digital display will flash for 10 seconds.
- (2) Adjust the starting height number with the ▲ or ▼ button.
- (3) After 10 seconds, the display will stop flashing and this will confirm that you have successfully set the starting height.

7. Lock / Unlock

- (1) Lock: Press the “lock” button for one second or do not touch any buttons for 20 seconds, then the image will be shown on the display to indicate that the lock was completed successfully (as below image).
- (2) Unlock: Hold the “lock” button for 3 seconds to unlock the hand control.



8. Switching Metric and Imperial Unit

- (1) Press the memory button **1,2** and the **Lock** button for 5 seconds.
- (2) The digital display will show **"C-I"**. If there is no further instruction operated within 5 seconds, the system will go to the normal operation mode.



- **How to choose a metric unit**

Press the button **1**; the digital display will show **"C"** to stand for centimeter.

- **How to choose an imperial unit**

Press button **2**, the digital display will show **"I"** to stand for an inch.

9. Error Codes

The digital display shows the error codes below to suggest the issues users may encounter during the operation. (Note 4)

Error code	Descriptions
000	Resetting
E00	Not reset completely
E01	Overuse protection
E02	Unbalance protection
E03	Anti-collision
E04	T-touch Protection
E11	M1 Motor over-current protection
E12	M2 Motor over-current protection
E13	M3 Motor over-current protection
E21	No Hall sensor from M1
E22	No Hall sensor from M2
E23	No Hall sensor from M3
E31	No current from M1
E32	No current from M2
E33	No current from M3

Note 4: Some control box may not support this function.

10. Power Saving Function - Waking Up the Control

- If no buttons have been pressed for 25 seconds, the display goes off. Press any button to light up the display again.
- If no buttons have been pressed for 30 seconds, the system goes to <math><0.1\text{W}</math> standby mode. [\(Note 5\)](#)
Long press any button to wake the system up. The digital display will show desk height again.

[Note 5](#) : It depends on the control box whether it support 0.1W standby mode or not.